

LUMITECH DATASHEET - Architectural Line



Symbolfoto

■ PRODUCT DESCRIPTION

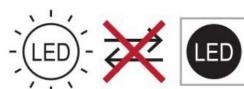
- High efficient architectural lighting
- Available in a variety of light colours
- Protection class IP54 - suitable for outdoor use
- Easy plug & play solution due to the Cinch Connection System
- High performance due to perfect thermal management
- Excellent illumination due to use of innovative linear optics
- SELV
- Easy mounting by use of FIXING PLATES
- Heat sink made of anodised, extruded aluminium
- Sustainable protection against humidity and corrosion by sealing of LED modules
- End caps made of PBT
- Lens made of PMMA, or PC
- Dimmable

■ TECHNICAL DATA

Supply voltage	24 VDC
Ambient temperature t_a	-30 ... +55 °C
Max. surface temperature on profile t_c	60 °C
Type of protection	IP54 (only with „PROTECTION KIT“)
Protection class	III
Risk group (EN 62471:2008)	1



Non-replaceable light source



LUMITECH DATASHEET - Architectural Line

■ TECHNICAL DATA | ORDER DATA

Art. No.	Type*	Version*	Length	No. of LED modules	Supply	CRI
9146xxxx	LED LE205 xx 1L14-UHD 24V/xxmA Lens 8DY	Lens	205mm	1	24V DC	≥90
9146xxxx	LED LE205 xx 1L14-UHD 24V/xxmA Cover 8DY	Cover	205mm	1	24V DC	≥90
9146xxxx	LED LE345 xx 2L14-UHD 24V/xxmA Lens 8DY	Lens	345mm	2	24V DC	≥90
9146xxxx	LED LE345 xx 2L14-UHD 24V/xxmA Cover 8DY	Cover	345mm	2	24V DC	≥90
9146xxxx	LED LE485 xx 3L14-UHD 24V/xxmA Lens 8DY	Lens	485mm	3	24V DC	≥90
9146xxxx	LED LE485 xx 3L14-UHD 24V/xxmA Cover 8DY	Cover	485mm	3	24V DC	≥90
9146xxxx	LED LE625 xx 4L14-UHD 24V/xxmA Lens 8DY	Lens	625mm	4	24V DC	≥90
9146xxxx	LED LE625 xx 4L14-UHD 24V/xxmA Cover 8DY	Cover	625mm	4	24V DC	≥90
9146xxxx	LED LE770 xx 5L14-UHD 24V/xxmA Lens 8DY	Lens	770mm	5	24V DC	≥90
9146xxxx	LED LE770 xx 5L14-UHD 24V/xxmA Cover 8DY	Cover	770mm	5	24V DC	≥90
9146xxxx	LED LE905 xx 6L14-UHD 24V/xxmA Lens 8DY	Lens	905mm	6	24V DC	≥90
9146xxxx	LED LE905 xx 6L14-UHD 24V/xxmA Cover 8DY	Cover	905mm	6	24V DC	≥90
9146xxxx	LED LE1050 xx 7L14-UHD 24V/xxmA Lens 8DY	Lens	1050mm	7	24V DC	≥90
9146xxxx	LED LE1050 xx 7L14-UHD 24V/xxmA Cover 8DY	Cover	1050mm	7	24V DC	≥90
9146xxxx	LED LE1190 xx 8L14-UHD 24V/xxmA Lens 8DY	Lens	1190mm	8	24V DC	≥90
9146xxxx	LED LE1190 xx 8L14-UHD 24V/xxmA Cover 8DY	Cover	1190mm	8	24V DC	≥90
9146xxxx	LED LE1330 xx 9L14-UHD 24V/xxmA Lens 8DY	Lens	1330mm	9	24V DC	≥90
9146xxxx	LED LE1330 xx 9L14-UHD 24V/xxmA Cover 8DY	Cover	1330mm	9	24V DC	≥90
9146xxxx	LED LE1470 xx 10L14-UHD 24V/xxmA Lens 8DY	Lens	1470mm	10	24V DC	≥90
9146xxxx	LED LE1470 xx 10L14-UHD 24V/xxmA Cover 8DY	Cover	1470mm	10	24V DC	≥90
9146xxxx	LED LE1610 xx 11L14-UHD 24V/xxmA Lens 8DY	Lens	1610mm	11	24V DC	≥90
9146xxxx	LED LE1610 xx 11L14-UHD 24V/xxmA Cover 8DY	Cover	1610mm	11	24V DC	≥90
9146xxxx	LED LE1750 xx 12L14-UHD 24V/xxmA Lens 8DY	Lens	1750mm	12	24V DC	≥90
9146xxxx	LED LE1750 xx 12L14-UHD 24V/xxmA Cover 8DY	Cover	1750mm	12	24V DC	≥90
9146xxxx	LED LE1890 xx 13L14-UHD 24V/xxmA Lens 8DY	Lens	1890mm	13	24V DC	≥90
9146xxxx	LED LE1890 xx 13L14-UHD 24V/xxmA Cover 8DY	Cover	1890mm	13	24V DC	≥90
9146xxxx	LED LE2030 xx 14L14-UHD 24V/xxmA Lens 8DY	Lens	2030mm	14	24V DC	≥90
9146xxxx	LED LE2030 xx 14L14-UHD 24V/xxmA Cover 8DY	Cover	2030mm	14	24V DC	≥90
9146xxxx	LED LE2175 xx 15L14-UHD 24V/xxmA Lens 8DY	Lens	2175mm	15	24V DC	≥90
9146xxxx	LED LE2175 xx 15L14-UHD 24V/xxmA Cover 8DY	Cover	2175mm	15	24V DC	≥90
9146xxxx	LED LE2315 xx 16L14-UHD 24V/xxmA Lens 8DY	Lens	2315mm	16	24V DC	≥90
9146xxxx	LED LE2315 xx 16L14-UHD 24V/xxmA Cover 8DY	Cover	2315mm	16	24V DC	≥90
9146xxxx	LED LE2455 xx 17L14-UHD 24V/xxmA Lens 8DY	Lens	2455mm	17	24V DC	≥90
9146xxxx	LED LE2455 xx 17L14-UHD 24V/xxmA Cover 8DY	Cover	2455mm	17	24V DC	≥90
9146xxxx	LED LE2600 xx 18L14-UHD 24V/xxmA Lens 8DY	Lens	2600mm	18	24V DC	≥90
9146xxxx	LED LE2600 xx 18L14-UHD 24V/xxmA Cover 8DY	Cover	2600mm	18	24V DC	≥90
9146xxxx	LED LE2735 xx 19L14-UHD 24V/xxmA Lens 8DY	Lens	2735mm	19	24V DC	≥90
9146xxxx	LED LE2735 xx 19L14-UHD 24V/xxmA Cover 8DY	Cover	2735mm	19	24V DC	≥90

Packaging: 12 pieces/carton, 360 pieces/pallet

LUMITECH DATASHEET - Architectural Line

TECHNICAL DATA | ORDER DATA

Art. No.	Type*	Version*	Length	No. of LED modules	Supply	CRI
9146xxxx	LED LE2875 xx 20L14-UHD 24V/xxmA Lens 8DY	Lens	2875mm	20	24V DC	≥90
9146xxxx	LED LE2875 xx 20L14-UHD 24V/xxmA Cover 8DY	Cover	2875mm	20	24V DC	≥90
9146xxxx	LED LE3015 xx 21L14-UHD 24V/xxmA Lens 8DY	Lens	3015mm	21	24V DC	≥90
9146xxxx	LED LE3015 xx 21L14-UHD 24V/xxmA Cover 8DY	Cover	3015mm	21	24V DC	≥90
9146xxxx	LED LE3155 xx 22L14-UHD 24V/xxmA Lens 8DY	Lens	3155mm	22	24V DC	≥90
9146xxxx	LED LE3155 xx 22L14-UHD 24V/xxmA Cover 8DY	Cover	3155mm	22	24V DC	≥90
9146xxxx	LED LE3295 xx 23L14-UHD 24V/xxmA Lens 8DY	Lens	3295mm	23	24V DC	≥90
9146xxxx	LED LE3295 xx 23L14-UHD 24V/xxmA Cover 8DY	Cover	3295mm	23	24V DC	≥90
9146xxxx	LED LE3435 xx 24L14-UHD 24V/xxmA Lens 8DY	Lens	3435mm	24	24V DC	≥90
9146xxxx	LED LE3435 xx 24L14-UHD 24V/xxmA Cover 8DY	Cover	3435mm	24	24V DC	≥90

Packaging: 12 pieces/carton, 360 pieces/pallet

- All typical values for Ta=25°C +/- 2°C
- Luminous flux min. value = typ. value - 20%
- Tolerance mechanical dimensions +/- 1mm
- Tolerance electrical data +/- 15%
- Tolerance optical data for CW, WW & NW +/-15% (LED Modul @ 60mA string current)
- Tolerance optical data for PC, BP +/-15% (LED Modul @ 100mA string current)
- Tolerance min. value CRI -1

***xx = light colour (see colour key below)**
***xxmA = Current rating (see current rating variants on page 4 / table 2)**

***Version:**
Lenses & Cover (see page 4 / table 3)

CONVERTER

Output voltage	24 VDC +10 %
Power LED driver	= sum of typical power of light engines + 20 %
Daisy chaining (luminaires)	100mA: max 24 L14-UHD modules 80mA: max 28 L14-UHD modules 60mA: max 33 L14-UHD modules 40mA: max 40 L14-UHD modules

Electrical supply/choice of LED driver

Architectural Line products from Lumitech are not protected against overvoltages, overcurrents, overloads or short-circuit currents. Reliable and safe operation of the Architectural Line can only be ensured by using LED drivers that comply with the relevant regulations. When selecting the LED driver, the following protective functions should be ensured:

- SELV
- Short-circuit protection
- Overload protection
- Overtemperature protection
- Protection against environmental influences

The Architectural Line must be operated on 24V constant voltage LED drivers.

Operation on a constant current LED driver will result in irreversible damage to the luminaire. Reverse polarity can damage the luminaire.

COLOUR KEY*

Code	CW	NW	WW	PC	BP
CCT	5000K	4000K	3000K	2700K	2400K

ENERGY EFFICIENT CLASS - LIGHT SOURCE

Current (mA)	CW	NW	WW	PC	BP
40mA	F	F	F	F	G
60mA	F	F	F	F	F
80mA	E	E	F	F	F
100mA	E	E	F	F	F

LUMITECH DATASHEET - Architectural Line

MODULES & LENGTHS

No. of LED modules	Length of luminaire
1	205mm
2	345mm
3	485mm
4	625mm
5	770mm
6	905mm
7	1050mm
8	1190mm
9	1330mm
10	1470mm
11	1610mm
12	1750mm
13	1890mm
14	2030mm
15	2175mm
16	2315mm
17	2455mm
18	2600mm
19	2735mm
20	2875mm
21	3015mm
22	3155mm
23	3295mm
24	3435mm

Table 1

LED MODULE - COLOURS, CURRENTS & LIGHT OUTPUTS

Light colour		Power & luminous flux p. module			
(Kelvin)	(Code)	@40mA / 1,0W	@60mA / 1,5W	@80mA / 1,9W	@100mA / 2,5W
5000K	CW	114lm	175lm	235lm	296lm
4000K	NW	114lm	175lm	235lm	296lm
3000K	WW	103lm	158lm	213lm	268lm
2700K	PC	100lm	153lm	206lm	260lm
2400K	BP	95lm	145lm	196lm	246lm

Table 2

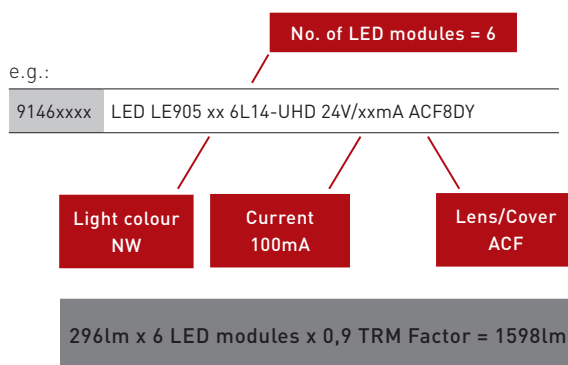
TRANSMISSION & FACTOR

Lens/Cover	Code	Transmission	TRM Factor
10° frosted	10F	84%	0,84
30° frosted	30F	85%	0,85
90° frosted	90F	90%	0,9
85° asym. frosted	ACF	90%	0,9
Cover frosted	COF	92%	0,92
Cover white	COW	75%	0,75
Cover flat frosted	CFF	87%	0,87
Cover flat white	CFW	70%	0,7

Table 3

CALCULATION OF THE LUMINOUS FLUX

Number of LED modules x luminous flux x transmission factor



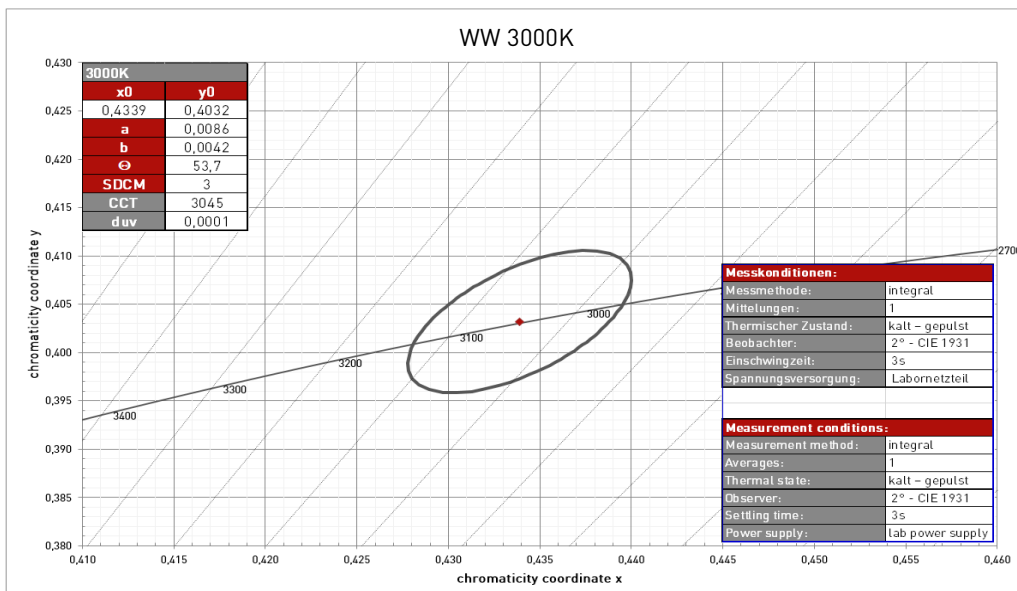
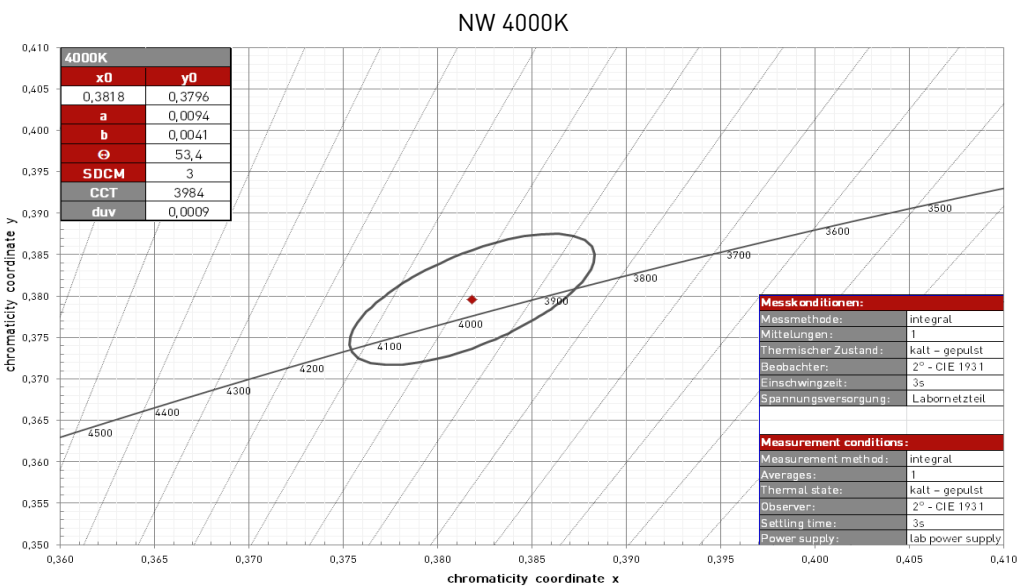
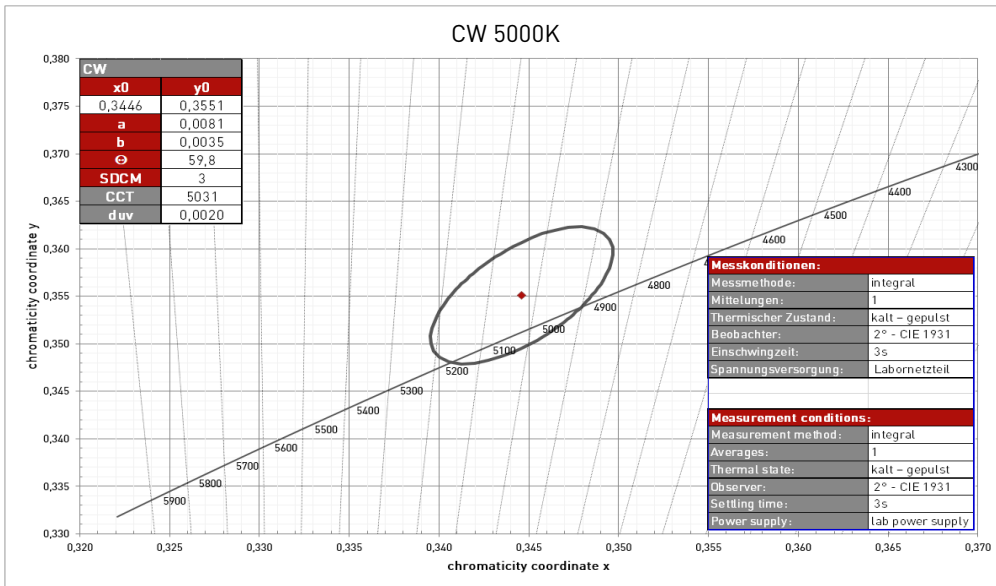
CALCULATION OF THE POWER

Number of LED modules x power p. LED module

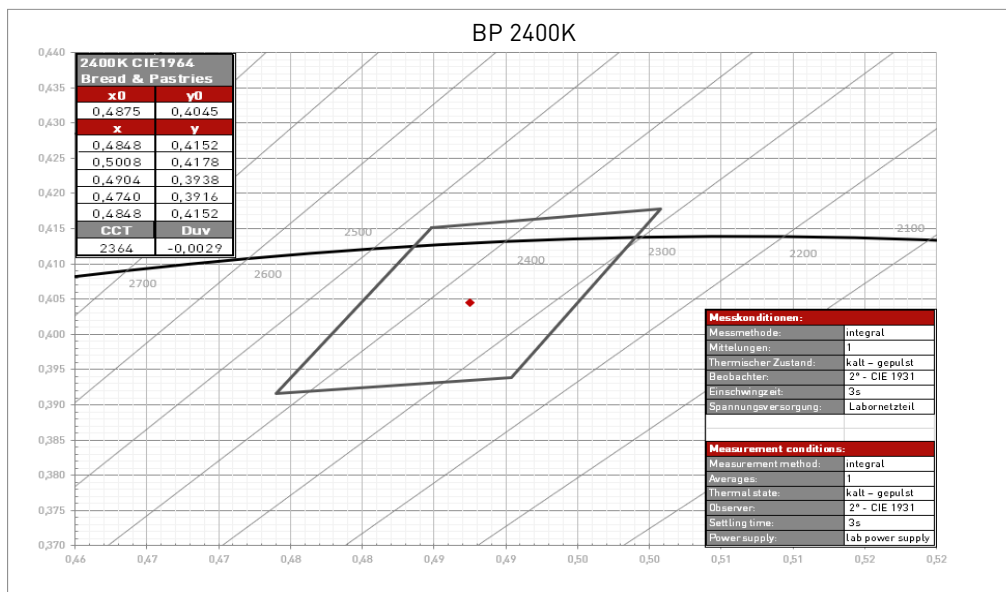
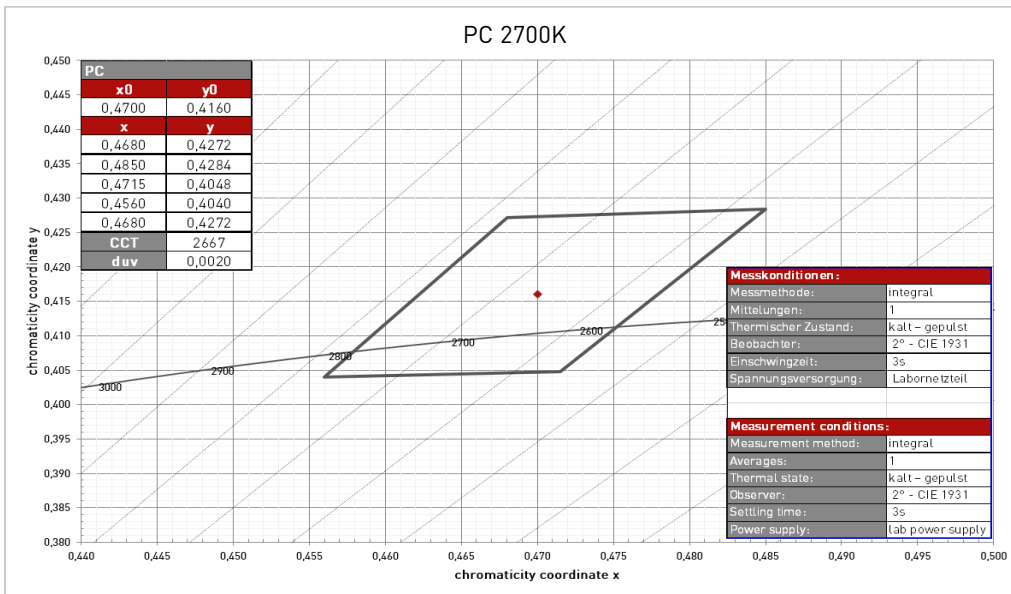
Current & Power p. module
@40mA / 1,0W
@60mA / 1,5W
@80mA / 1,9W
@100mA / 2,5W

LUMITECH DATASHEET - Architectural Line

COORDINATES AND TOLERANCES - LED MODULES

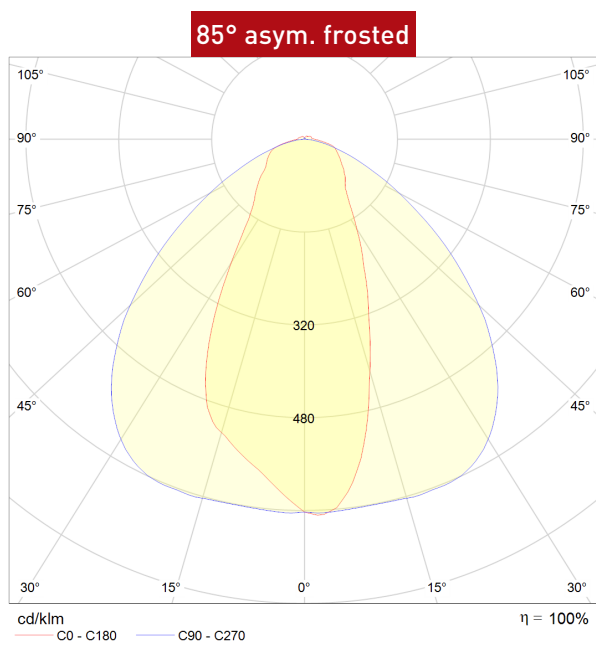
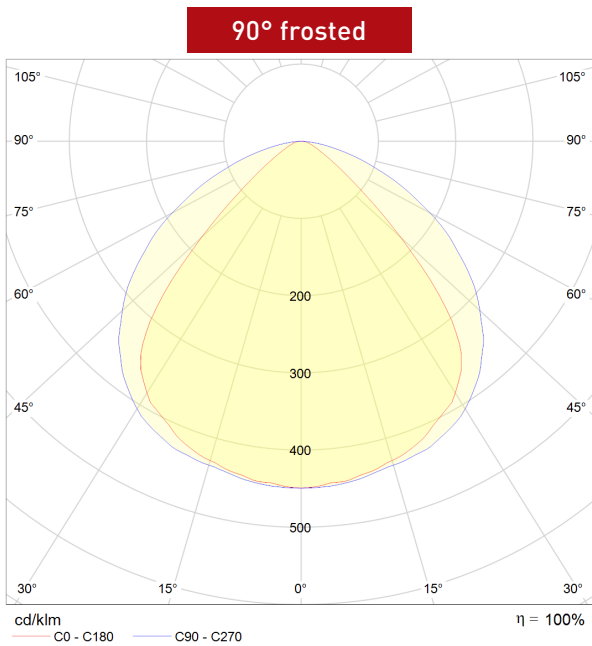
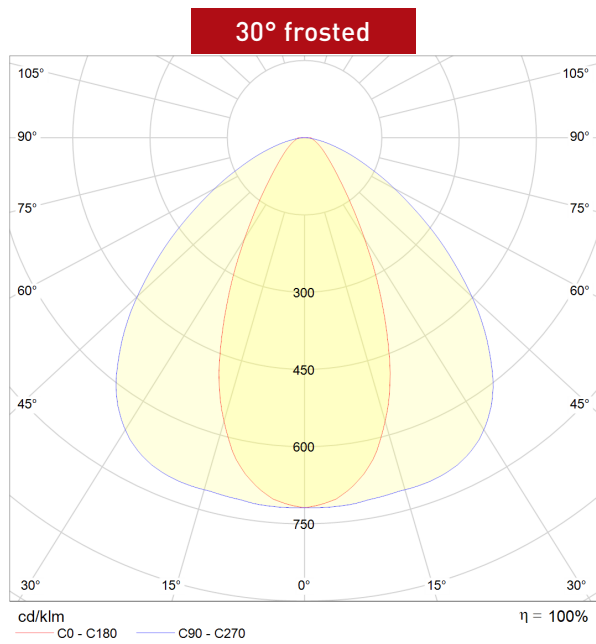
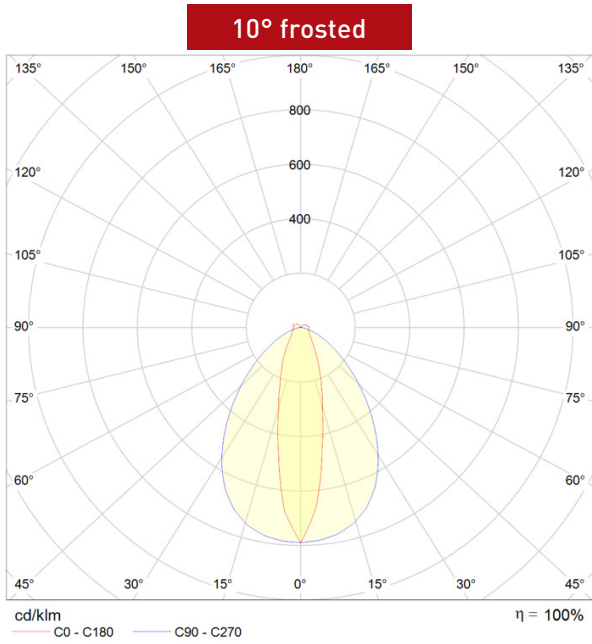


LUMITECH DATASHEET - Architectural Line



LUMITECH DATASHEET - Architectural Line

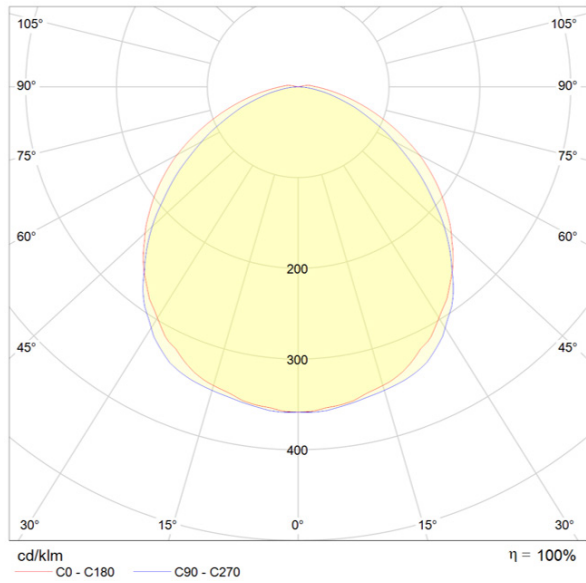
III OPTICAL PROPERTIES - LUMINAIRES



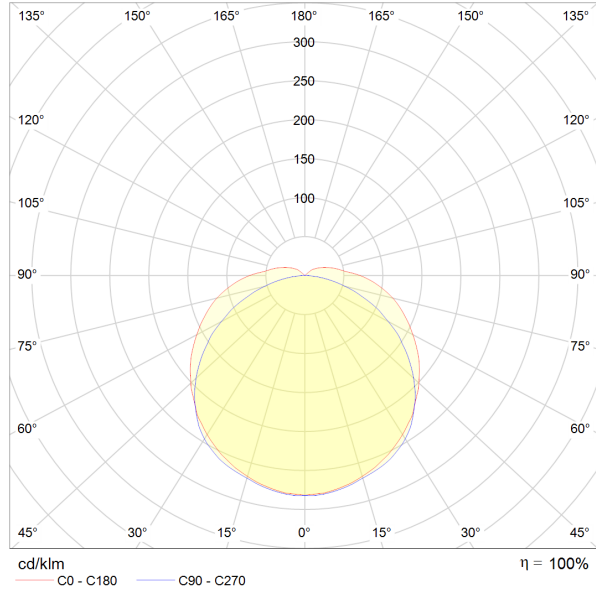
LUMITECH DATASHEET - Architectural Line

OPTICAL PROPERTIES - LUMINAIRES

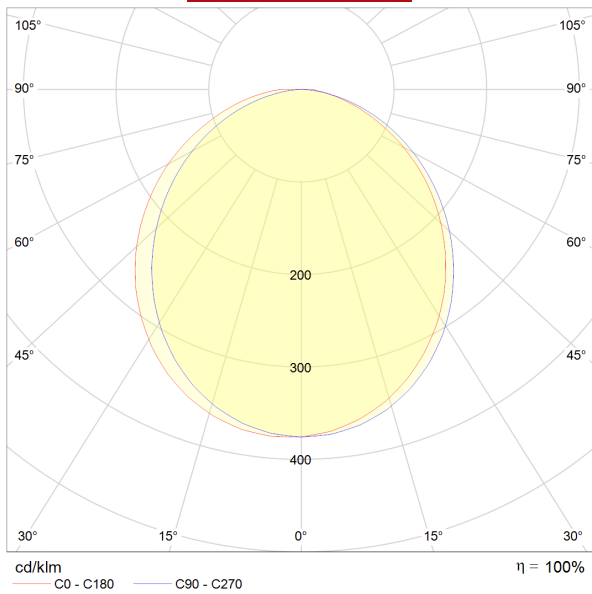
Cover frosted



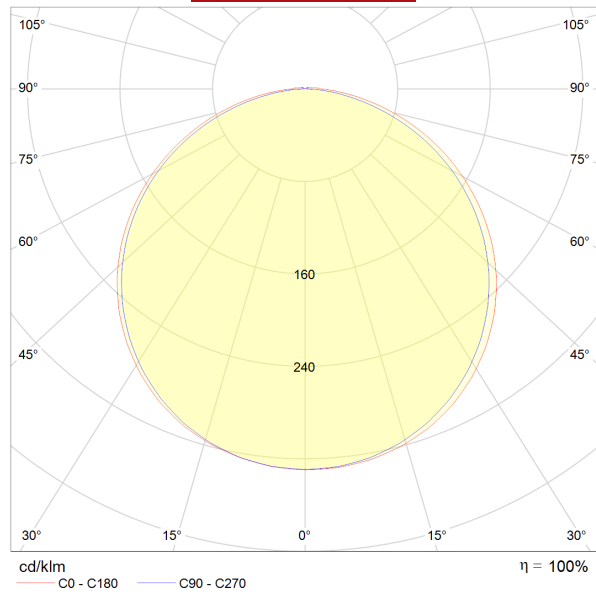
Cover white



Cover flat frosted



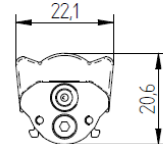
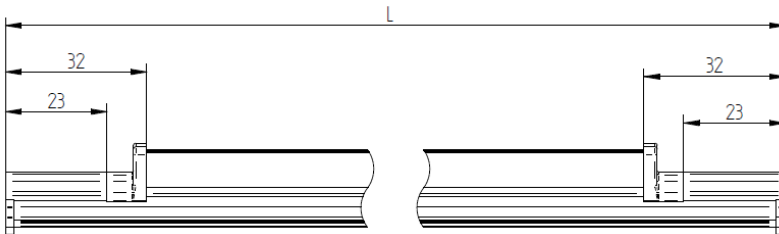
Cover flat white



LUMITECH DATASHEET - Architectural Line

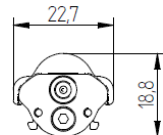
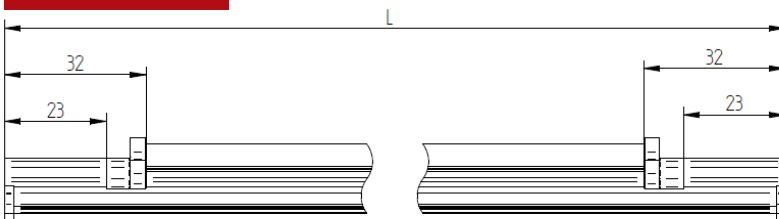
III DIMENSIONS - LUMINAIRE

10° Lens



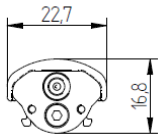
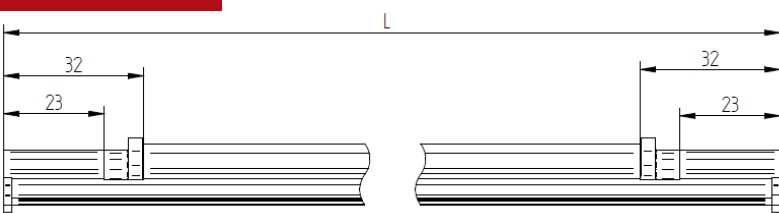
10°

30° Lens



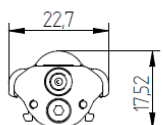
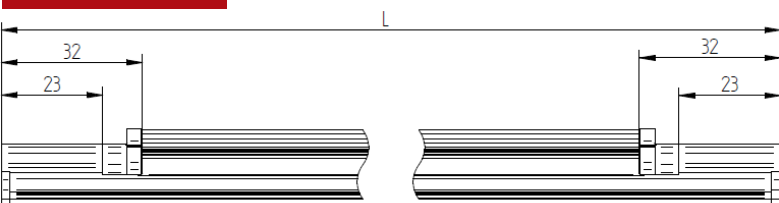
30°

90° Lens



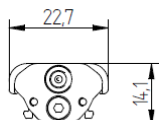
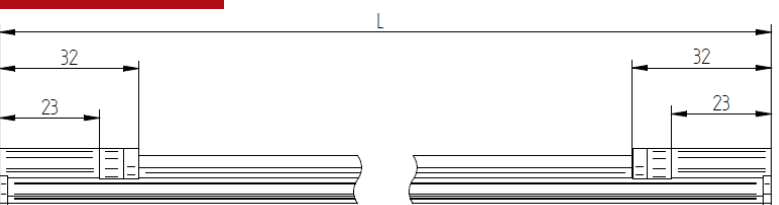
90°

ACF Lens



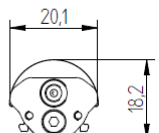
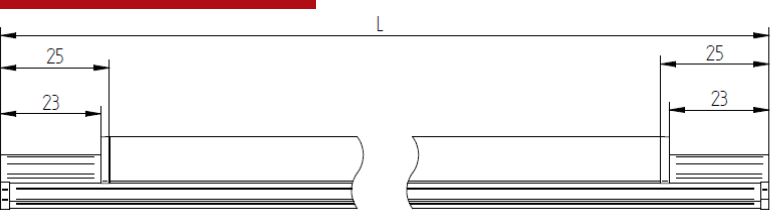
ACF

Cover Flat



Cover flat

Cover frosted/white



COW / COF

LUMITECH DATASHEET - Architectural Line

LIFETIME

50.000h (L80 B10)

THERMAL BEHAVIOUR

Operating temperature (operation, no defects)	ta	-30 ... +55 °C
Storage temperature	ts	-30 ... +60 °C
Temperature cooling profile ¹²	tc	-30 ... +60 °C

¹ Values apply to operation at 100% output, natural convection.

² If the maximum temperature limits are exceeded, the lifetime of the module will be greatly reduced or the module may be destroyed. The tc point temperature at the profile of the light engine should be measured in the thermally stable state and under operating conditions by means of a temperature sensor or temperature-sensitive sticker (available for example from conrad.com or rs-components.com) in accordance with EN60598-1. The entire profile can be used as the tc point.

STANDARDS

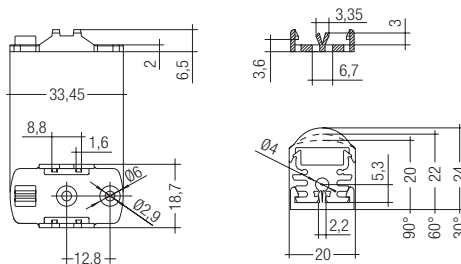
- EN 60598-1
- EN 60598-2-1
- EN 62031
- EN 62471



Note

- Installation should only be conducted by a licensed electrician.
- Reversing the polarity can damage the product!
- Make sure the converter has been switched off prior to connecting the light engine. If this is not observed, the light engine may be damaged!
- Connection or operation is only permitted when using the specified converters. Higher voltages result in damage to or failure of the light engine.

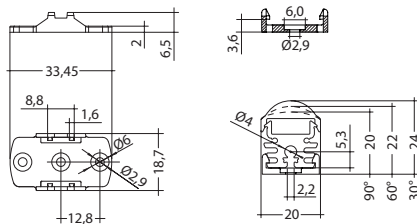
ACCESSORIES - FIXING PLATES



ORDER DATA - Plate ECS 0°

Type	Art. No.
LED FIXING PLATE ECS 0°	88166859

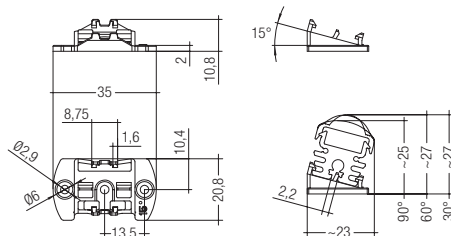
Packaging: 100 pc./pack, 2.000 pc./carton



ORDER DATA - Plate ECS 0°

Type	Art. No.
LED Z161 FIXING PLATE ECS 0°	88712147

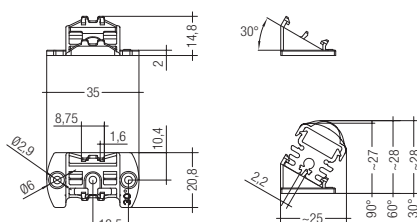
Packaging: 100 pc./pack, 2.000 pc./carton



ORDER DATA - Plate ECS 15°

Type	Art. No.
LED FIXING PLATE ECS 15°	88167372

Packaging: 50 pc./pack, 1.000 pc./carton

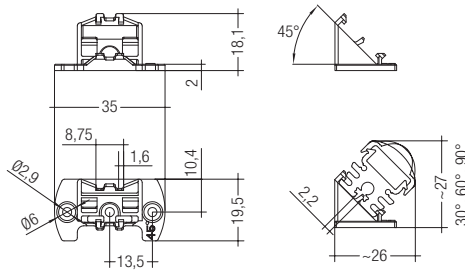


ORDER DATA - Plate ECS 30°

Type	Art. No.
LED FIXING PLATE ECS 30°	88167373

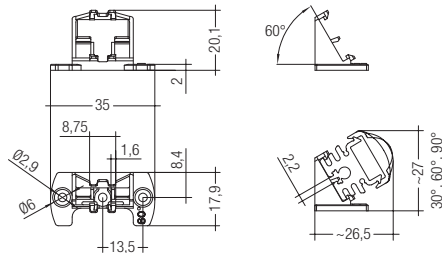
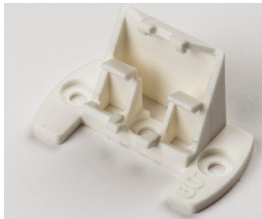
Packaging: 50 pc./pack, 1.000 pc./carton

LUMITECH DATASHEET - Architectural Line



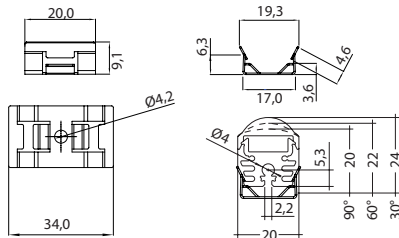
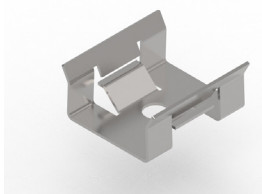
ORDER DATA - Plate ECS 45°

Type	Art. No.
LED FIXING PLATE ECS 45°	88167374
Packaging: 50 pc./pack, 1.000 pc./carton	



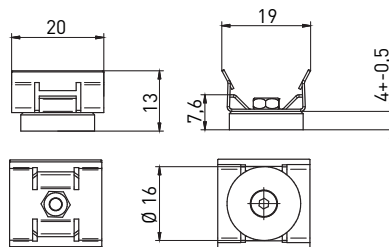
ORDER DATA - Plate ECS 60°

Type	Art. No.
LED FIXING PLATE ECS 60°	88167375
Packaging: 50 pc./pack, 1.000 pc./carton	



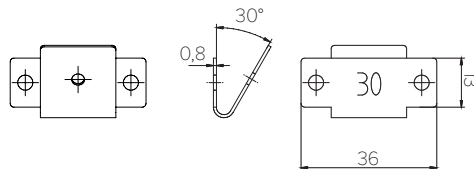
ORDER DATA - Plate Metal 0°

Type	Art. No.
LED FIXING PLATE METAL 0°	88167376
Packaging: 50 pc./pack, 1.000 pc./carton	



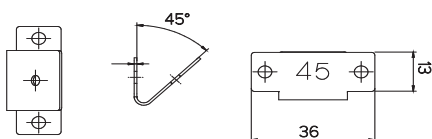
ORDER DATA - Plate Metal 0° Magnetic

Type	Art. No.
LED FIXING PLATE METAL 0° Magnetic	88167382
Packaging: 50 pc./pack, 1.000 pc./carton	



ORDER DATA - Plate Metal 30°

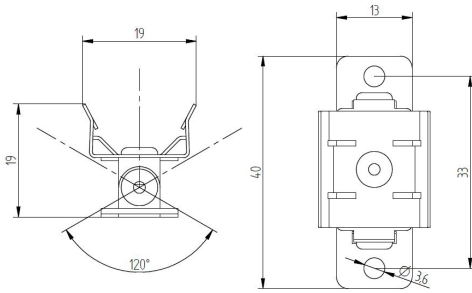
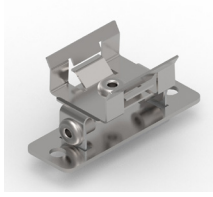
Type	Art. No.
LED METAL ANGLE ECS 30°	88167378
LED MAGNETIC METAL ANGLE ECS 30°	88167386
Packaging: 50 pc./pack, 1.000 pc./carton	



ORDER DATA - Plate Metal 45°

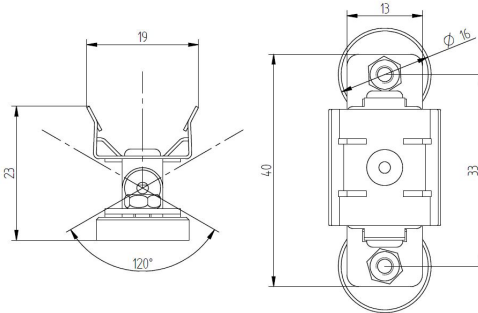
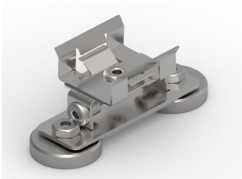
Type	Art. No.
LED METAL ANGLE ECS 45°	88167379
LED MAGNETIC METAL ANGLE ECS 45°	88167387
Packaging: 50 pc./pack, 1.000 pc./carton	

LUMITECH DATASHEET - Architectural Line



■ ORDER DATA - Plate Metal adjustable

Type	Art. No.
LED FIXING PLATE METAL - adjustable	88167384
Packaging: 1.000 Stk./carton	



■ ORDER DATA - Plate Metal adj. magnetic

Type	Art. No.
LED MAGNETIC PLATE METAL - adjustable	88167385
Packaging: 1.00 Stk./carton	

■ ACCESSORIES - CABELING & PROTECTION

■ CINCH | FEEDER



- Feeder cable for connecting a linear LED engine to a converter via cinch

■ ORDERING DATA - Feeder

Length	Weight	Type	Art. Nr.
530 mm	30g	LED Feeder angled CINCH 530	89601612
3.000 mm	85g	LED Feeder straight CINCH 3000	89601602
4.000 mm	102g	LED Feeder angled CINCH 4000	89601603
5.000 mm	120g	LED Feeder straight CINCH 5000	89601611

■ CINCH | BRIDGE



- Bridge for connecting two linear LED engines via cinch

■ ORDERING DATA - Bridge

Length	Weight	Type	Art. Nr.
50 mm	4g	LED Bridge angled CINCH 50	89601610
120 mm	6g	LED Bridge straight CINCH 120	89601604
200mm	9g	LED Bridge angled CINCH 200	89601625
250 mm	10g	LED Bridge straight CINCH 250	89601607

■ CINCH | DIRECT CONNECTOR



- Direct connection of two linear LED engines via cinch

■ ORDERING DATA - Direct Connector

Length	Weight	Type	Art. Nr.
4,5 mm	80g	LED Bridge CINCH direct connector (100 pcs per pack)	89601606

LUMITECH DATASHEET - Architectural Line

III CINCH | PROTECTION PLUG



- Protection plug for cinch endcaps on LED-Luminaires

III ORDERING DATA - Protection Plug

Type	Art. Nr.
LED PROTECTION PLUG CINCH black (100 pcs per pack)	88167416

III CINCH | SEALING RING



- Additional sealing ring for connectors such as feeder, bridge & direct connector

III ORDERING DATA - Sealing Ring

Type	Art. Nr.
LED SEALING RING CINCH black (100 pcs per pack)	88167417